

# INSTRUMENTS PARTS CATALOGUE

## Brass Instruments

### Slide Trombones



#### **Bb/F/Eb/D Bass Slide Trombone ASL 382**



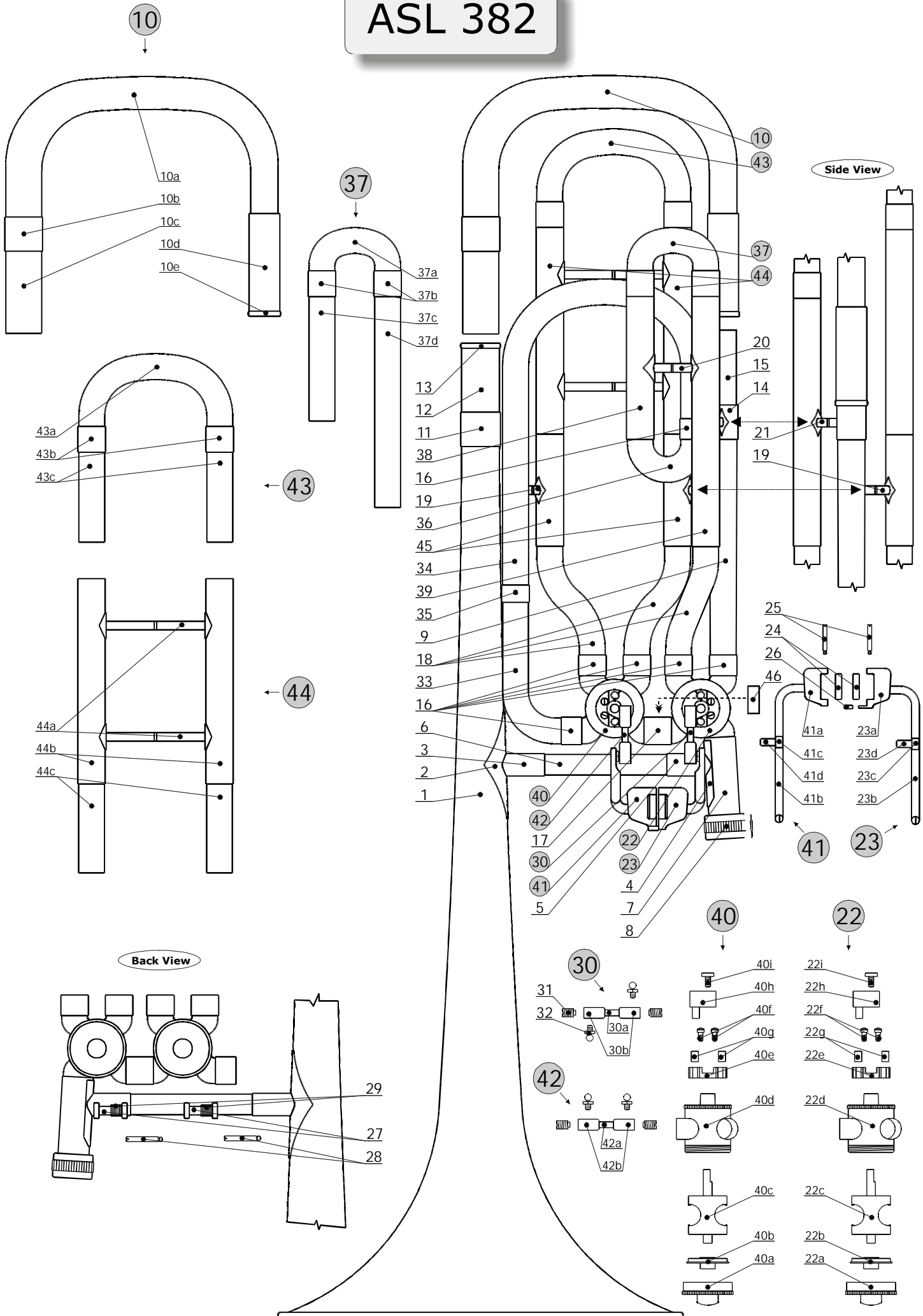
#### ***AMATI Bb/F/Eb/D Bass Slide Trombone ASL 382***

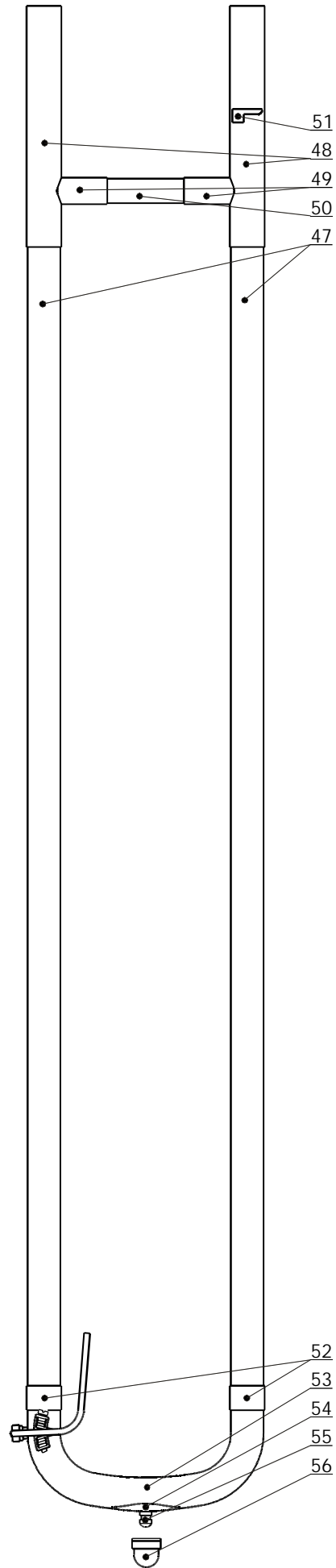
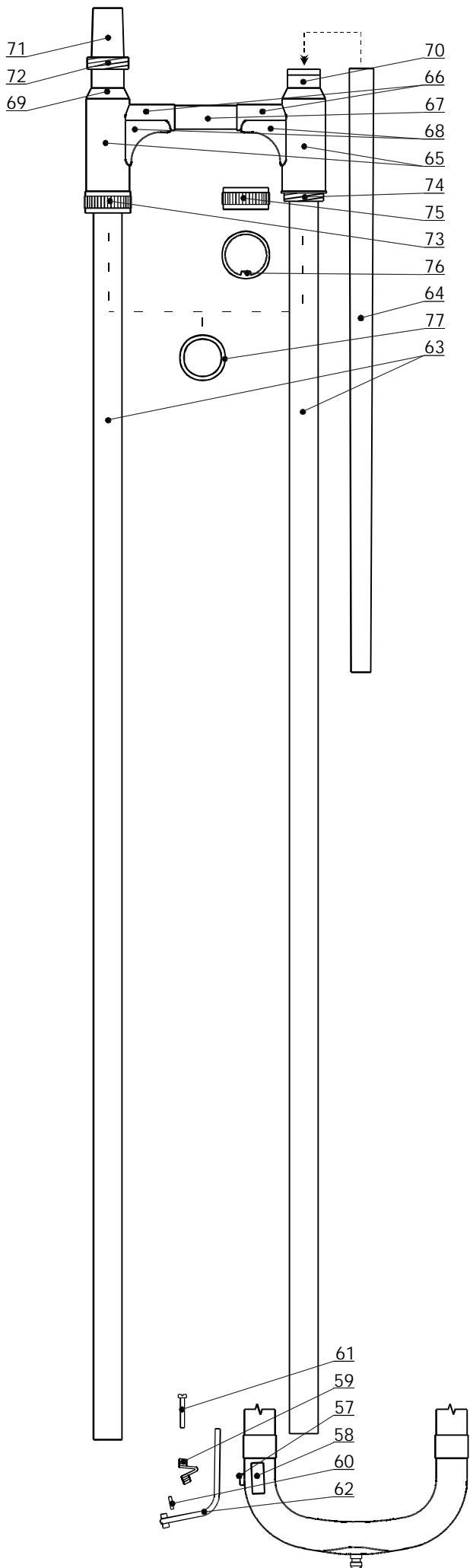
*bore 14.0mm, bell 235mm, closed wrap, waterkey, nickel-silver trimmings, D slide, lacquer, silver-plated mouthpiece # 3G, plastic case # 6676.*

***Last Update August2004***

[www.amati-denak.cz](http://www.amati-denak.cz)

# ASL 382





## Parts For AMATI Bb/F/Eb/D Bass Slide Trombone ASL 382.

| List #              | Part #          | Description                                      | Note  |
|---------------------|-----------------|--|---|
| <i>Bell Section</i> |                 |  |   |
| 1                   | OZV 382SL L     | Bell, engraved with the 'Amati Kraslice' Logo.   |   |
| 2                   | P 175P L        | Plate large.                                     |   |
| 3                   | S 602 L         | Brace Socket for large Plate.                    |   |
| **                  | T 265 L         | Brace Socket complete with Plate (List # 2-3).   |   |
| 4                   | P 384P L        | Plate small.                                     |   |
| 5                   | S 605 L         | Brace Socket for Slide Receiver.                 |   |
| **                  | T 266 L         | Brace Socket complete with Plate (List # 4-5).   |   |
| 6                   | STE 110 P2 L    | Brace Tube.                                      |   |
| 7                   | S 375 L         | Slide Receiver.                                  |   |
| 8                   | S 377 L         | Bell Lock Nut.                                   |   |
| 9                   | D 232 L         | Connecting Tube.                                 |   |
| 10                  | LS 382SL K      | Tuning Slide complete, lacquer.                  |   |
| 10a                 | OH 12 L         | Tuning Slide Bow.                                |   |
| 10b                 | HTA 020 P12 L   | Tuning Slide Ferrule, large.                     |   |
| 10c                 | THE 058 M12 L   | Tuning Slide Inner Tubing, large.                |   |
| 10d                 | H 764 L         | Tuning Slide Outer Tubing, small.                |   |
| 10e                 | S 764P L        | Tuning Slide Outer Tubing Ring, small.           |   |
| 11                  | H 308 L         | Connecting Ring large, Bell - to - Tuning Slide. |   |
| 12                  | THA 050 P12 L   | Tuning Slide Outer Tubing, large.                |   |
| 13                  | S 273P L        | Tuning Slide Outer Tubing Ring, large.           |   |
| 14                  | HTA 020 P7 L    | Tuning Slide Ferrule, small.                     |   |
| 15                  | THE 058 M7 L    | Tuning Slide Inner Tubing, small.                |   |
| 16                  | H 331 L         | Connecting Ferrule, small (1 of 6pcs).           |   |
| 17                  | H 082 L         | Connecting Ferrule, large.                       |   |
| 18                  | D 146 L         | Crook (1 of 3pcs).                               |   |
| 19                  | A HX 0130D PP L | Brace with Plates, (1 of 2pcs).                  | <i>Brace Length to be specified.</i>        |
| 20                  | A HX 0210D PP L | Brace with Plates.                               | <i>Brace Length to be specified.</i>        |
| 21                  | A HX 0100D PP L | Brace with Plates.                               | <i>Brace Length to be specified.</i>        |
| <i>F Attachment</i> |                 |  |   |
| 22                  | KVF 382ASL L    | F Rotary Valve Assy.                             |   |
| 22a                 | S 698/M7 L      | Bottom Cap.                                      |   |
| 22b                 | S 699/M7 L      | Rotary Valve Support.                            |   |
| 22c                 | MC 007 L        | Rotary Valve.                                    |   |
| 22d                 | V 006 VIDL L    | Rotary Valve Casing.                             |   |
| 22e                 | L 081H L        | Stop Plate.                                      |   |
| 22f                 | S 669P L        | Stop Plate Retaining Screw (1 pf 2pcs).          |   |
| 22g                 | SNURA 5         | Bumper (length 1cm).                             | <i>SNURA PR.5 = Bumper (length 1meter).</i> |
| 22h                 | T 100 L         | Stop Arm.  |   |
| 22i                 | S 434 L         | Stop Arm Retaining Screw.                        |   |
| 23                  | T 037 N         | Lever, nickel-plated.                            |   |
| 23a                 | N 059 L         | Lever Finger Plate.                              |   |
| 23b                 | S 683 L         | Lever Linkage.                                   |   |
| 23c                 | S 679 L         | Lever Rod Tube Socket.                           |   |
| 23d                 | TR 5 L          | Lever Rod Tube.                                  |   |
| 24                  | UX 60           | Lever Roller (1 of 2pcs).                        |   |
| 25                  | AX 11*25.3      | Lever Roller Rod (1 of 2pcs).                    |   |
| 26                  | DK PAKA         | Lever Bumper.                                    |   |
| 27                  | V 011 L         | Lever Holder (1 of 2pcs).                        |   |
| 28                  | S 673           | Lever Screw (1 of 2pcs).                         |   |
| 29                  | P 383/ASL       | Lever Spring (1 of 2pcs).                        |   |
| 30                  | T 002P          | Linkage complete, lacquer.                       |   |
| 30a                 | S 091P L        | Linkage Rod.                                     |   |
| 30b                 | S 636 L         | Linkage Bearing (1 of 2pcs).                     |   |
| 31                  | S 631           | Linkage Screw (1 of 4pcs).                       |   |
| 32                  | S 632           | Ball Pivot (1 of 4pcs).                          |   |
| 33                  | R 466 L         | Crook small.                                     |   |
| 34                  | D 382 L         | Crook large.                                     |   |
| 35                  | H 058P L        | Connecting Ring, Crook small - to - Crook large. |   |
| 36                  | O 142 L         | Bow.   |   |
| 37                  | LS 382SL FK     | F Tuning Slide complete, lacquer.                |   |
| 37a                 | O 142 L         | F Tuning Slide Bow.                              |   |
| 37b                 | HTA 015 P6 L    | F Tuning Slide Ferrule (1 of 2pcs).              |   |
| 37c                 | THE 080 M6 L    | F Tuning Slide Inner Tubing, short.              |   |
| 37d                 | THE 130 M6 L    | F Tuning Slide Inner Tubing, long.               |   |

|                           |                 |   |                                      |
|---------------------------|-----------------|---|--------------------------------------|
| 38                        | THA 085 P6 L    | F Tuning Slide Outer Tubing, short.                         |                                      |
| 39                        | THA 145 P6 L    | F Tuning Slide Outer Tubing, long.                          |                                      |
| <i>Eb/D Attachment</i>    |                 |   |                                      |
| 40                        | KVES 382ASL L   | Eb Rotary Valve Assy.                                       |                                      |
| 40a                       | S 698/M7 L      | Bottom Cap.   |                                      |
| 40b                       | S 699/M7 L      | Rotary Valve Support.                                       |                                      |
| 40c                       | MC 007 L        | Rotary Valve.   |                                      |
| 40d                       | V 006 L         | Rotary Valve Casing.  |                                      |
| 40e                       | L 081H L        | Stop Plate.   |                                      |
| 40f                       | S 669 L         | Stop Plate Retaining Screw (1 pf 2pcs).                     |                                      |
| 40g                       | SNURA 5         | Bumper (length 1cm).  | SNURA PR.5 = Bumper (length 1meter). |
| 40h                       | T 100 L         | Stop Arm.   |                                      |
| 40i                       | S 434 L         | Stop Arm Retaining Screw.                                   |                                      |
| 41                        | T 036 N         | Lever, nickel-plated.                                       |                                      |
| 41a                       | IX 39 L         | Lever Finger Plate.   |                                      |
| 41b                       | S 683 L         | Lever Linkage.  |                                      |
| 41c                       | S 679 L         | Lever Rod Tube Socket.                                      |                                      |
| 41d                       | TR 5 L          | Lever Rod Tube.   |                                      |
| 42                        | T 003P          | Linkage complete, lacquer.                                  |                                      |
| 42a                       | S 091P L        | Linkage Rod.  |                                      |
| 42b                       | S 636 L         | Linkage Bearing (1 of 2pcs).                                |                                      |
| 43                        | LS 382SL EK     | Eb Tuning Slide complete, lacquer.                          |                                      |
| 43a                       | O 147 L         | Eb Tuning Slide Bow.  |                                      |
| 43b                       | HTA 015 P6 L    | Eb Tuning Slide Ferrule (1 of 2pcs).                        |                                      |
| 43c                       | THE 060 M6 L    | Eb Tuning Slide Inner Tubing (1 of 2pcs).                   |                                      |
| 44                        | LS 382SL DK     | D Tuning Slide complete, lacquer.                           |                                      |
| 44a                       | A HX 0580D PP L | Brace with Plates (1 of 2pcs).                              |                                      |
| 44b                       | THA 120 P6 L    | D Slide Outer Tubing (1 of 2pcs).                           |                                      |
| 44c                       | THE 119 M6 L    | D Slide Inner Tubing (1 of 2pcs).                           |                                      |
| 45                        | THA 065 P6 L    | Eb/D Tuning Slide Outer Tubing (1 of 2pcs).                 |                                      |
| 46                        | H 080 L         | F - to - Eb/D Rotary Valve Insert.                          |                                      |
| **                        | OZV 382SL K     | Bell Assy. complete (List # 1-46), lacquer.                 |                                      |
| <i>Hand Slide Section</i> |                 |   |                                      |
| 47                        | MS 006 L        | Hand Slide Outer Tubing (1 of 2pcs).                        |                                      |
| 48                        | H 311 L         | Reinforcing Tube (1 of 2pcs).                               |                                      |
| 49                        | S 604 L         | Brace Socket for Reinforcing Tube (1 of 2pcs).              |                                      |
| **                        | T 318 L         | Brace Socket complete with Reinforcing Tube (List # 48-49). |                                      |
| 50                        | STE 075 P2 L    | Brace Tube.   |                                      |
| 51                        | P 277M L        | Slide Lock Nut Hinge.                                       |                                      |
| 52                        | H 310 L         | Hand Slide Ferrule (1 of 2pcs).                             |                                      |
| 53                        | O 199 L         | Hand Slide Crook.   |                                      |
| 54                        | P 609P L        | Hand Slide Crook Guard Plate.                               |                                      |
| 55                        | S 047P L        | Hand Slide Crook Guard.                                     |                                      |
| **                        | T 017 L         | Hand Slide Crook Guard complete with Plate (List # 54-55).  |                                      |
| 56                        | CEPICKA SL      | Hand Slide Crook Guard Bumper.                              |                                      |
| 57                        | S 255 L         | Waterkey Nipple.  |                                      |
| 58                        | P 289 L         | Waterkey Saddle.  |                                      |
| 59                        | P VKP           | Waterkey Spring.  |                                      |
| 60                        | KOREK VK 5*11*8 | Waterkey Cork.  |                                      |
| 61                        | S 069           | Waterkey Screw, lacquer.                                    |                                      |
| 62                        | VKM 045         | Waterkey Lever, lacquer.                                    |                                      |
| **                        | VKM 045 K       | Waterkey Assy. complete (List # 59-62), lacquer.            |                                      |
| **                        | SN 382SL O      | Outer Hand Slide Assy. complete (List # 47-62), lacquer.    |                                      |
| 63                        | MI 006 CR       | Hand Slide Inner Tubing (1 of 2pcs), chrome-plated.         |                                      |
| 64                        | DH 096 L        | Mouthpipe.  |                                      |
| 65                        | H 312 L         | Slide Overpart (1 of 2pcs).                                 |                                      |
| 66                        | S 603 L         | Brace Socket for Slide Overpart (1 of 2 pcs).               |                                      |
| **                        | T 319 L         | Brace Socket complete with Slide Overpart (List # 65-66).   |                                      |
| 67                        | STE 070 P2 L    | Brace Tube.   |                                      |
| 68                        | P 362 L         | Finger Support (1 of 2pcs).                                 |                                      |
| 69                        | S 374 L         | Slide Overpart Insert.                                      |                                      |
| 70                        | S 374/A L       | Mouthpiece Receiver.  |                                      |
| 71                        | S 376 L         | End Shank.  |                                      |
| 72                        | S 378 L         | End Shank Thread.   |                                      |
| 73                        | S 381 L         | Slide Overpart Nut.   |                                      |
| 74                        | S 380 L         | Slide Lock Thread.  |                                      |

|    |            |  |
|----|------------|--|
| 75 | S 379 L    | Slide Lock Nut.  |
| 76 | H 306 L    | Slide Lock Nut Tab.                                      |
| 77 | DK MI 006  | Slide Bumper (1 of 2pcs).                                |
| ** | SN 382SL I | Inner Hand Slide Assy. complete (List # 63-77), lacquer. |
| ** | SN 382SL K | Hand Slide complete, lacquer (List # 47-77), lacquer.    |

**Important:**

- 1/ All metal parts polished and unlacquered, unless otherwise specified. Please specify desired finish, when ordering.
- 2/ Please indicate the Instrument's Model Number, when ordering.